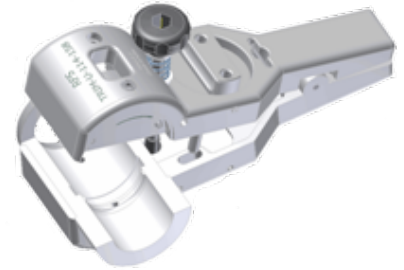


Combination preparation tool (Universal Trimming Tool), RADIAFLEX® Cable 1 1/4"
for P-Series connector

Product Description

This special trimming tool improves the cable preparation prior to connector attachment. No further tools are required to prepare the cable for the connector attachment. This is due to the unique design of the trimming tool, which combines all necessary functions in one tool. It can be used for RADIAFLEX® 1 1/4" foam dielectric cables in combination with the RADIAFLEX® P-Series connector.

The Universal Trimming Tool Series offers the additional advantage to be convertible to different connector families and cable types and sizes (CELLFLEX® cables and RADIAFLEX® cables 1 1/4" and 1 5/8") only by changing the inserts. Different inserts are available as optional items, for references see below or contact your RFS sales contact.



TRIM-SET-R114-XXX shown

Features/Benefits

- **Universal Trimming Tool concept**
One basic tool can be used for cable sizes 1 1/4" and 1 5/8" only by changing the insert
- **Precision cable preparation tool**
Always exact and repeatable trimming dimensions.
- **Intuitive use of tool**
Easy and precise preparation of cables for connector installation.
- **Long-lasting cutting blades**
Easy to clean, smooth dielectric surface improves IM performance.

Technical Specifications

Product Line	Coaxial Cable Accessories
Product Type	Tool
Transmission Line Type	RADIAFLEX 114 (except RCF114)
Coaxial Cable Type	Foam Dielectric, Copper foil outer conductor
Cable Size	1 1/4"
Type of Tool	Combination Cable Preparation Tool
Configuration	Universal Trimming Tool
Spare Part / Useful Accessories	Spare blades : TRIM-B34
Color	Aluminum Color
Material	Aluminum Alloy
Length, mm (in)	260 (10.2)
Height, mm (in)	130 (5.12)
Width, mm (in)	110 (4.33)
Package Quantity	1
Weight per piece, kg (lb)	1.75 (3.86)

Notes

Other available inserts to convert the tool for use with other connector families or cable sizes:

- **TRIM-IL114-001** for connectors B32, 062/072 on cable LCFS/UCF114-50
- **TRIM-IL114-D01** for connectors D01 on cable LCFS/UCF114-50
- **TRIM-IL114-C02** for connectors C02 on cable LCFS/UCF114-50
- **TRIM-IL158-001** for connectors B32, 022, 062/072 on cable LCF158-50
- **TRIM-IL158-D01** for connectors D01 on cable LCFS/UCF158-50
- **TRIM-IL158-C02** for connectors C02 on cable LCF158-50
- **TRIM-IR158-P01** for all connectors on RADIAFLEX® cables 1 5/8" with copper foil outer conductor except for jacket options JFCLA

Other Documentation

User Manual: [1000008138-04_User Manual TRIM-U-114-158.pdf](http://www.rfs-world.com/1000008138-04_User Manual TRIM-U-114-158.pdf)