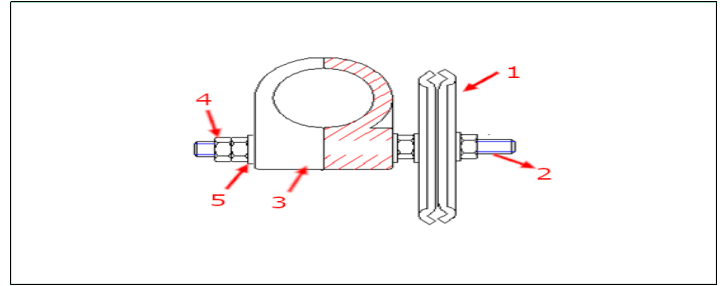


Grapa interior cable 1-5/8"

Indoor clamp cable 1-5/8"



Descripción / Description

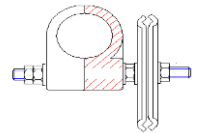
These clamps are specially suitable for electrical + FO cables. FO cables will be protected C-shape rubber pieces inside the clamp.

Estas grapas están especialmente diseñadas para albergar 1 cable de alimentación más 1 fibra óptica, la cual va protegida por piezas de goma en forma de medio tubo insertadas en las piezas plásticas.

Grapa interior cable 1-5/8" simple / Indoor clamp for a single cable 1-5/8" (SXKE102234)

Center Cable Cod: 0660461NT

| Nº | Partes | Parts | Especificaciones Specifications | Material Materials | Cantidad Quantity |
|----|---|-------|------------------------------------|-----------------------|----------------------|
| 1 | pletina fijación regiband /fastening flange | | 2mm | SUS304 | 2pcs |
| 2 | varilla roscada / threaded rod | | M8*110mm | SUS304 | 1pcs |
| 3 | abrazadera plástica / plastic clamp | | Ø50,2mm | PP | 2pcs |
| 4 | tuerca / nut | | Ø8 | SUS304 | 3pcs |
| 5 | arandela plana / flat washer | | Ø8 | SUS304 | 4pcs |

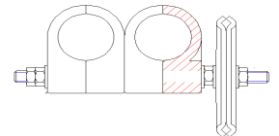


Cod: EEM-NTME114114

Grapa interior cable 1-5/8" doble / Indoor clamp for two cables 1-5/8" (SXKE102223)

Center Cable Cod: 066052INT

| Nº | Partes | Parts | Especificaciones Specifications | Material Materials | Cantidad Quantity |
|----|---|-------|------------------------------------|-----------------------|----------------------|
| 1 | pletina fijación regiband /fastening flange | | 2mm | SUS304 | 2pcs |
| 2 | varilla roscada / threaded rod | | M8*170mm | SUS304 | 1pcs |
| 3 | abrazadera plástica / plastic clamp | | Ø50,2mm | PP | 4pcs |
| 4 | tuerca / nut | | Ø8 | SUS304 | 3pcs |
| 5 | arandela plana / flat washer | | Ø8 | SUS304 | 4pcs |



Cod: EEM-NTME114214

Desempeño y requisitos ambientales / Performance and environmental requirements:

| | |
|---------------------------------------|----------------------------|
| Rango temperatura / Temperature range | -55°C ~ +85°C |
| Propiedades / Properties | Anti-aging, anti-corrosion |
| RoHS | 2002/95/EC fit |

Herramienta instalación / Installation tools:

| | |
|------------------------|-----|
| Llave inglesa / Wrench | 13# |
|------------------------|-----|

Rev.150519



* Center Cable reserves the right to modify or change specifications without notice