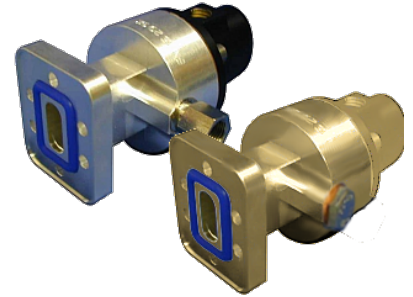


Connector for FLEXWELL® elliptical waveguide E150, PDR140 Flange

### Product Description

Standard connector for FLEXWELL® elliptical waveguide E150 with PDR140 flange, Plast 2000 sealed  
frequency range: 14.0 - 15.35 GHz



### Features/Benefits

#### Superior Design

- Due to the precise manufacturing no tuning screws are necessary
- The terminations are brass passivated for good electrical performance
- A gas inlet is included

#### Quick & Easy Installation

- Different flaring tools are available
- No tuning in the field

### Technical Specifications

|  |                      |
|--|----------------------|
| Transmission Line Type                   | Elliptical Waveguide |
| Cable Type                               | E150                 |
| Model Series                             | E150 Series          |
| Connector Interface                      | PDR140               |
| Connector Type                           | Fixed                |
| Sealing Method                           | Plast 2000           |
| Connector Frequency Range, GHz           | 14 - 15.35           |
| Plating Connector                        | Brass                |
| Length, mm (in)                          | 85 (3.4)             |
| Outer Diameter, mm (in)                  | 45 (1.8)             |
| Weight, kg (lb)                          | 0.4 (0.88)           |
| Waterproof Level                         | IP68                 |
| Gas Inlet                                | G 1/8"               |
| Sealing Volume, cm <sup>3</sup> (ounces) | 20 (0.68)            |

### Notes

### Other Documentation

Installation Instruction: [1000006055-05\\_E105 to E220.pdf](#)