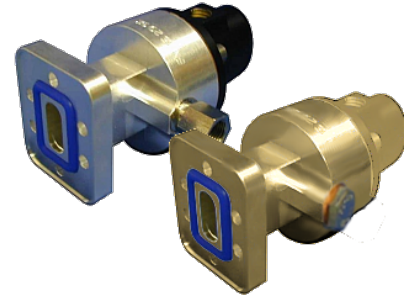


Connector for FLEXWELL® elliptical waveguide E150, PDR120 Flange

### Product Description

Standard connector for FLEXWELL® elliptical waveguide E150 with PDR120 flange, Plast 2000 sealed  
frequency range: 13.4 - 14.5 GHz



### Features/Benefits

#### Superior Design

- Due to the precise manufacturing no tuning screws are necessary
- The terminations are brass passivated for good electrical performance
- A gas inlet is included

#### Quick & Easy Installation

- Different flaring tools are available
- No tuning in the field

### Technical Specifications

Transmission Line Type	Elliptical Waveguide
Cable Type	E150
Model Series	E150 Series
Connector Interface	PDR120
Connector Type	Fixed
Sealing Method	Plast 2000
Connector Frequency Range, GHz	13.4 - 14.5
Plating Connector	Brass
Length, mm (in)	85 (3.4)
Outer Diameter, mm (in)	45 (1.8)
Weight, kg (lb)	0.4 (0.88)
Waterproof Level	IP68
Gas Inlet	G 1/8"
Sealing Volume, cm <sup>3</sup> (ounces)	20 (0.68)

### Notes

### Other Documentation

Installation Instruction: [2800030-b.pdf](#)