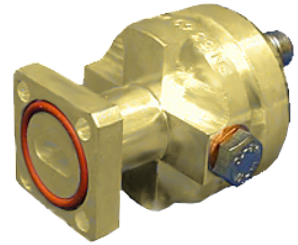




Connector for FLEXWELL® elliptical waveguide E300, PBR320 Flange

Product Description

Standard connector for FLEXWELL® elliptical waveguide E300 with PBR320 flange, gasket with shrinking sleeve sealed frequency range: 27.5 - 33.4 GHz



Features/Benefits

Superior Design

- Due to the precise manufacturing no tuning screws are necessary
- The terminations are brass passivated for good electrical performance
- A gas inlet is included

Quick & Easy Installation

- Different flaring tools are available
- No tuning in the field

Technical Specifications

Transmission Line Type	Elliptical Waveguide
Cable Type	E300
Model Series	E300 Series
Connector Interface	PBR320
Connector Type	Fixed
Sealing Method	Gasket with Shrinking Sleeve
Connector Frequency Range, GHz	27.5 - 33.4
Plating Connector	Brass
Length, mm (in)	44 (1.7)
Outer Diameter, mm (in)	32 (1.3)
Weight, kg (lb)	0.2 (0.44)
Waterproof Level	IP68
Gas Inlet	M5 x 0.8

Notes

Other Documentation

Application Note: [1000009163-01_Application Note_Installation of Heat Shrink Sleeves for additional sealing of Connectors.pdf](#)
 Installation Instruction: [2800039-b.pdf](#)