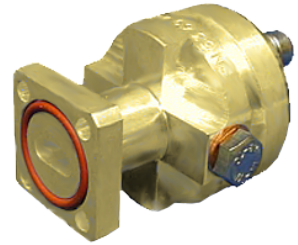




Connector for FLEXWELL® elliptical waveguide E250, PBR260 Flange

### Product Description

Standard connector for FLEXWELL® elliptical waveguide E250 with PBR260 flange, gasket with shrinking sleeve sealed frequency range: 24.25 - 26.5 GHz



### Features/Benefits

#### Superior Design

- Due to the precise manufacturing no tuning screws are necessary
- The terminations are brass passivated for good electrical performance
- A gas inlet is included

#### Quick & Easy Installation

- Different flaring tools are available
- No tuning in the field

### Technical Specifications

Transmission Line Type	Elliptical Waveguide
Cable Type	E250
Model Series	E250 Series
Connector Interface	PBR260
Connector Type	Fixed
Sealing Method	Gasket with Shrinking Sleeve
Connector Frequency Range, GHz	24.25 - 26.5
Plating Connector	Brass
Length, mm (in)	38 (1.5)
Outer Diameter, mm (in)	32 (1.3)
Weight, kg (lb)	0.2 (0.44)
Waterproof Level	IP68
Gas Inlet	M5 x 0.8

### Notes

### Other Documentation

Application Note: [1000009163-01\\_Application Note\\_Installation of Heat Shrink Sleeves for additional sealing of Connectors.pdf](#)  
 Installation Instruction: [2800039-b.pdf](#)